

# TAKAMATSU CITY GUIDE BOOK

TAKE FREE

English  
〔英語版〕



# COURSE MAP

- Cycling course
- Shopping street walk-and-eat course
- Ritsurin Garden course
- Sweets spots
- Souvenir spots
- [Bicycle Rental]
- Manned port
- Unmanned port



Do you have some time right now?  
Let us show you around in Takamatsu.

## [ PIPING Production Staff ]

The five of us are friends and members of the Handmade Circle at Takamatsu University. We worked together to create this sightseeing map. Take this map with you and use it to fully enjoy Takamatsu.



miku



rino



sayaka



yumi



nanami

Miku Toyozaawa — I love Shiba Inu dogs. I hope you will enjoy your stay in Takamatsu!

Rino Yamaoka — I love going out for lunch with my family and friends. I had a great time participating in this project.

Sayaka Takumi — I am always full of energy! I hope everyone will experience the greatness of Takamatsu♪

Yumi Sasaki — For this project, I visited many places and had valuable experiences.

Nanami Uehara — I am glad that I could discover so many cute and tasty sweets while working on this project.

## [ COURSE ]

- Cycling course ... P05~P06
- Shopping street walk-and-eat course ... P07~P08
- Ritsurin Garden course ... P09~P10

## [ FEATUER ]

- Sweets spots ... P11~P12
- Souvenir spots ... P13~P14

## What is "PIPING"

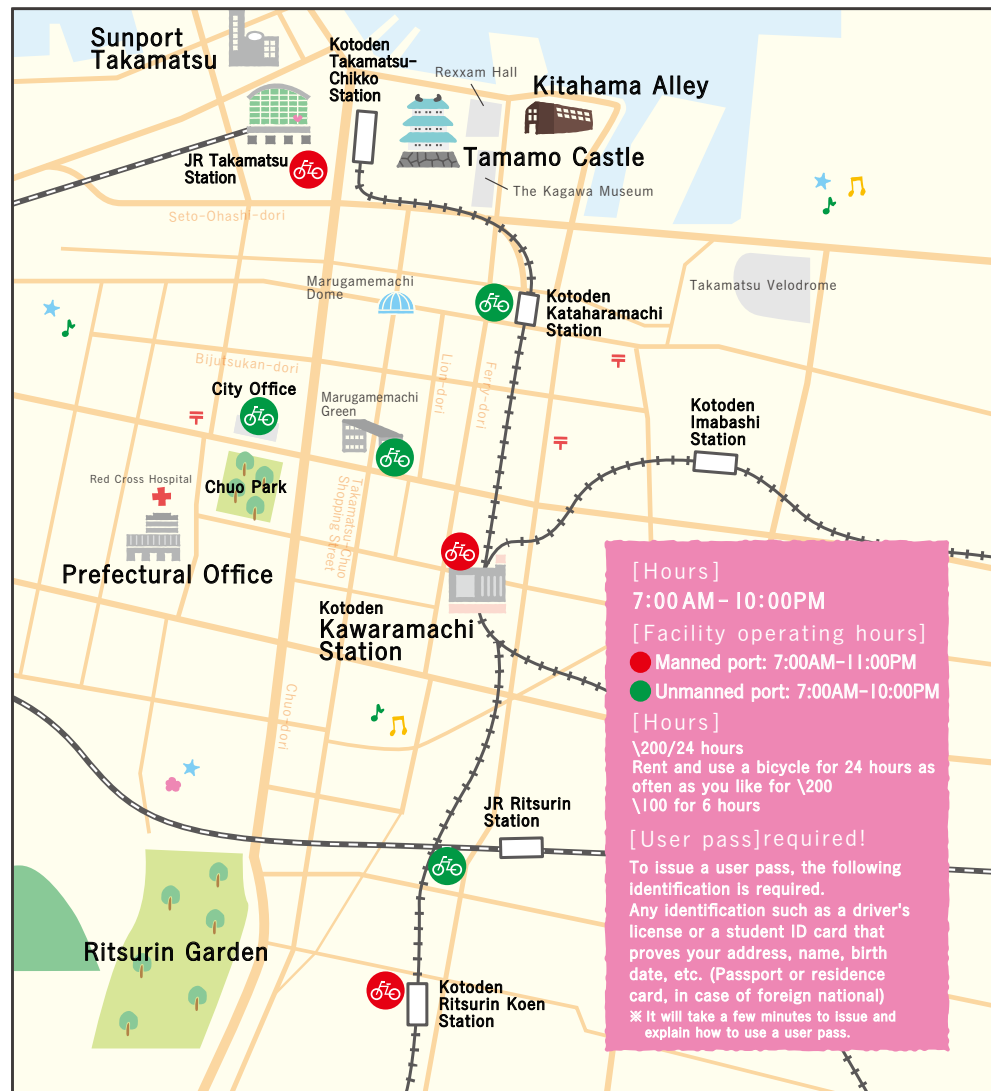
"PIPING" derives from a combination of two words, "pippi" - meaning udon noodles in Sanuki (present day Kagawa) dialect - and "shopping"! Since Takamatsu City has Japan's longest shopping street extending north, south, east and west, and sightseeing spots are all located in a compact area, you can enjoy so many different things within the city! Famous for its udon noodles, Takamatsu City has many attractions. Enjoy Takamatsu City with PIPING!

Check here for more information on shops! →



# Let's rent a bicycle!

Takamatsu City is very compact!  
You can easily travel anywhere in the city on bicycle.



[Hours]  
7:00 AM - 10:00 PM  
[Facility operating hours]  
● Manned port: 7:00 AM - 11:00 PM  
● Unmanned port: 7:00 AM - 10:00 PM  
[Hours]  
\200/24 hours  
Rent and use a bicycle for 24 hours as often as you like for \200  
\100 for 6 hours  
[User pass] required!  
To issue a user pass, the following identification is required.  
Any identification such as a driver's license or a student ID card that proves your address, name, birth date, etc. (Passport or residence card, in case of foreign national)  
※ It will take a few minutes to issue and explain how to use a user pass.

## RENTAL Let's rent a bicycle!

01



Have some identification handy such as a driver's license that can prove your address, name, etc.



Fill in the application form and submit it at the counter! And wait a minute for your user pass.



Pick out a bicycle. Make sure to do your own safety check!!



When the gate opens, let your tour begin!



Pay the indicated fare.



Insert your user pass into the fare adjustment machine at the exit.

## RETURN When you finished riding your bicycle, please return the bicycle!

02



Insert your user pass into the fare adjustment machine at the entrance to the bicycle parking lot. Please follow the instructions panel.



When the gate opens, you can enter again.  
※ If an extra charge is indicated, please pay the amount!



Please return your bicycle to the designated place leaving the key inserted.

## [INFORMATION]

Bicycle Rental Management Center TEL: 087-831-5383

- Phone hours: (Seven days) 7:00 AM ~ 10:00 PM
- Temporary user pass application hours: (Seven days) 7:30 AM ~ 10:00 PM

- You can return your bicycle to any port including those where you did not rent the bicycle.
- Bicycles are available for rental at all 7 ports. ○ Reservations in advance are not accepted.
- If there are no bicycles in stock, bicycles may not be available.



# Take a ride along the coast

## Cycling course

Rent a bicycle and tour sightseeing spots♪

Ride a bicycle along the coast, while enjoying the history of Takamatsu and eating delicious food! Of course, strolling along the coast is also recommended♪

START Takamatsu Station  
↓  
GOAL Sunport Takamatsu



sayaka



Snap some pics

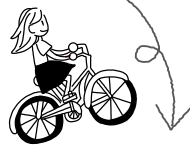
### NO.1 Takamatsu Station

#### Welcome to Takamatsu!!

Takamatsu Station is the gateway to Takamatsu City, the seat of the Kagawa prefectural government. Takamatsu Station is also well-known as "Sanuki Takamatsu Udon Station." Check out the cute face on the station's glass wall!

☎087-825-1702

📍1-20 Hamano-cho, Takamatsu City, Kagawa



Takamatsu Matsudaira Family's Villa  
Important Cultural Property [Hiunkaku]



Boats moving in the waterways around the castle were monitored from the tower.  
[Tsukimi Yagura]

### NO.2

#### Ruins of Takamatsu Castle [Tamamo Park]

##### Learn the history of Takamatsu!

Takamatsu City Tamamo Park is open to the public with an admission charge. Enjoy the view while riding on a Japanese-style boat (March to November) and feed sea bream too! Many events are held throughout the year, so check out the website in advance.

☎087-851-1521 📍2-1 Tamamo-cho, Takamatsu City, Kagawa

🕒 Hours open vary according to the season.

📺 Closed Open throughout the year 📺 Available



Beef Stew Plate ¥1,200



Located in "Kitahama Alley," a renovated zone that was once an old warehouse district of the port.



Potato Millefeuille Pizza ¥1,000  
The combination of crispy pizza crust and potato is excellent!

### NO.3 umie

#### Relax in this retro atmosphere♪

Umie is a restaurant where you can rest in an open space atmosphere. The ocean view from inside the restaurant will reinvigorate you. Enjoy the hot stew and relax your mind and body.

☎087-811-7455

📍 Kitahama Alley, 3-2 Kitahama-cho, Takamatsu City, Kagawa

🕒 Monday to Friday: 11:00AM~11:00PM

Saturday: 10:00AM~11:00PM

Sunday and national holidays: 10:00AM~9:00PM

📺 Closed Wednesday 📺 Not available

### Cyo'tto Cafe

#### Eating will make you happy♡

Try the OIRI soft serve ice cream at "Cyo'tto Cafe." It's got a cute look and it's delicious. It surely is the most instagrammable food item♡

☎087-825-5256

📍 Maritime Plaza 1F, 2-1 Sunport, Takamatsu City, Kagawa

🕒 10:00AM~9:00PM

📺 Closed Open throughout the year

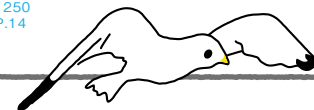
📺 Not available



Kagawa Oyomeiri Soft Serve Ice Cream ¥250  
What is OIRI? → P.14



Specialty crepes are also served!



The night view is beautiful!



A fountain located in front of the sea  
[Mizu no Hashira]



The area adjacent to Takamatsu Station is Sunport Takamatsu.

### NO.5

#### Sunport Takamatsu

##### The gateway to Shikoku in front of the sea

Sunport Takamatsu, a redevelopment area that includes Takamatsu Port in Takamatsu City, Kagawa Prefecture was constructed as the new hub of Takamatsu City. The view of Seto Inland Sea from the rooftop open space of the symbol tower is magnificent!

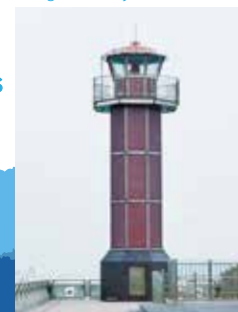
☎087-826-2555

📍 1-1 Sunport, Takamatsu City, Kagawa

🕒 Hours open vary depending on the facility.

📺 Closed Open throughout the year 📺 Available

View the Red Lighthouse while taking a leisurely walk.



Illuminated at night♡



Commanding a bird's-eye view of the Seto Inland Sea!!

### NO.4 Red Lighthouse

#### A lighthouse for lovers that looks out at the sea

Red Lighthouse - well-known as "Setoshirube" - was recognized as one of the three most beautiful night lighthouses in Japan. At night, the glass-walled lighthouse gleams in a fantastic red. Enjoy the ocean view walking along the seawall leading up to the lighthouse.

📍 Sunport, Takamatsu City, Kagawa (Takamatsu Port)

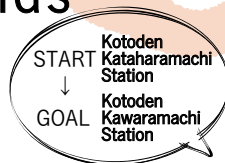
🕒 24 hours a day (depending on the weather)

📺 Closed Open throughout the year 📺 Available



# Share with your friends Walk-and-eat course

There's lots of delicious food that will make you taste and feel what Kagawa is all about♡  
Share good times and food with your friends.



miku

## NO.1

### Kanmichaya Budonoki This is not to miss at least once!

This restaurant serves "Anmochi Zoni," local cuisine of Kagawa Prefecture. The combination of white miso and sweet bean paste is excellent!

☎ 087-822-2042

📍 2-1 Hyakkenmachi, Takamatsu City, Kagawa

🕒 Tuesday to Saturday: 10:00AM~8:00PM  
Sunday and national holidays: 10:00AM~4:00PM  
(Last order: Weekdays: 7:30PM, Sunday and national holidays: 3:30PM)

📺 Closed Monday (Tuesday if Monday falls on a national holiday)

🚫 Not available



Just a few seconds walk after entering Lion-dori from the Takamatsu Mitsukoshi side

Anmochi Zoni (miso soup with rice cake stuffed with sweet bean paste) ¥670



Matcha Zukushi Parfait (powdered green tea parfait) ¥900 Comes with chewy delectable rice flour dumplings.



A shop with an open atmosphere surrounded by plants



Very popular lunch with a drink (limited number served) ¥1,300



Sanuki Pasta (fettuccine) ¥270  
A number of local specialties from Kagawa and Shikoku served!

## NO.2 Machi no Schule 963 Proposal for a sensible lifestyle ☺

When you want to buy souvenirs from Kagawa or relax in a cafe, by all means, please come here. Ingredients for the dishes served in this cafe are mainly from Kagawa Prefecture, with consideration given to a pesticide-free and additive-free menu. All of our dishes served are popular because they are not only delicious but also good for your health♡

☎ 087-800-7888 📍 Takamatsu Marugamemachi Sanbanga East Bldg. 2F, 13-3 Marugamemachi, Takamatsu City, Kagawa

🕒 Product sales: 11:00AM~7:30PM Cafe: [Monday to Thursday] 11:30AM~6:00PM (Last order: 5:30PM) [Friday to Sunday] 11:30AM~10:00PM (Last order: 9:00PM)

📺 Closed 3rd Monday (next day if the 3rd Monday falls on a national holiday)

🚫 Designated parking lot available



## According to your mood and taste ♪

What do you feel like eating? Something sweet, something salty, something light or something a little heavy? Choose a restaurant according to your mood and appetite at the moment.

Gelato with wasanbon sugar, powdered green tea, and chocolate chips ¥300



The vivid red door and light blue roof are eye-catching!

## NO.4

### Sanbiki no Kobuta (Three Little Pigs)

Their nicknames are "Sanbuta."

Handmade cakes using local fresh fruit, juice, sandwiches, etc. You will feel like eating them all♡

☎ 087-861-5353

📍 1-4-9 Tokiwa-cho, Takamatsu City, Kagawa

🕒 10:00AM~7:00PM

📺 Closed Wednesday

🚫 Not available



Strawberry French Toast ¥800  
The combination of soft toast and strawberries is out of this world!

Cute Signboard is eye-catching! 🐷🐷🐷



Fruit Sandwich ¥430  
Plenty of cream and fresh fruit!

## NO.3

### Gelateria toi toi toi

Gelato with fresh fruit!

Have some fun combining 3 kinds of your favorite flavors! This is an authentic gelateria where you can fully enjoy the taste of the ingredients.

☎ 087-861-5353

📍 1-9-3 Tokiwa-cho, Takamatsu City, Kagawa

🕒 11:11AM~7:01PM

📺 Closed Wednesday

🚫 Not available

Gelato with raspberry, white chocolate and pumpkin ¥300



## NO.5

### Onikuyasan no Mitsuwa (Butcher's Mitsuwa)

You cannot pass by this shop without browsing and buying something!

When you are a little but hungry, Mitsuwa is the best choice. You can eat piping hot fried foods because they are fried as soon as you make your order.

☎ 087-831-4609 📍 1-4-8 Tokiwa-cho, Takamatsu City, Kagawa

🕒 Noon~1:00PM, 3:00PM~7:30PM

📺 Closed Closed irregularly 🚫 Not available



Karasupa ¥450  
Fried chicken and spicy potato



Mitsuwa croquette ¥120  
The soft, flaky texture is superb!



# Ritsurin Garden

Enjoy the views for each of the four seasons.

Ritsurin Garden is the largest of all the Cultural Property Gardens designated as special places of scenic beauty by the national government. The park was designed and completed nearly 300 years ago. Enjoy the various scenes throughout the garden and its natural features that change with the four seasons.



The peak viewing time is from late March to early April.

## Beautiful cherry blossoms blooming in the garden

Cherry blossoms of about 320 cherry blossom trees, mainly Somei-Yoshino, bloom full in spring. At night when the garden is illuminated, enjoy the garden view that transforms into something completely different from daytime.



The peak viewing time is from late November to early December.

## The most popular spot for viewing autumn foliage

Brilliant deep scarlet leaves appear as if folded over each other over and over again. When the garden is illuminated at night, enjoy more beautiful, fantastic garden views like in spring time.

## Beautiful summer waterside scene

In a tastefully constructed building, experience the atmosphere of classical Japan and feel a pleasant breeze on your skin even during a hot summer day. You might even catch a glimpse of brown hawk owls, which visit the garden only in summer.



Kikugetsu-tei Teahouse in early summer

## Beautiful garden even during winter

Even when the cold weather sets in, the sense of elegance from the winter garden scenes will leave you enchanted. If you are fortunate, you might find yourself in a scenic snow-covered garden landscape.



Snow-covered landscape of Ritsurin

## GARDEN MAP

- Restaurant
- Parking lot
- Restroom
- Coffee shop
- Bicycle parking lot
- Wheelchair-accessible
- Admission fee required (with powdered green tea)
- Smoking area
- Diaper-changing station
- Souvenir shop
- Fire extinguisher
- Nursing room
- AED
- Western-style toilet
- Ostomate-accessible



### 1 Garden Cafe RITSURIN

A cafe restaurant certified as Sanuki Dining Offers a varied menu using ingredients from Kagawa Prefecture.

Sanuki Takase tea Udon noodles ¥1,296



### 4 Hanazono-tei

Sanuki local cuisine served

Delicious cuisine served in this restaurant will make you feel as if you were the local feudal lord. Reservations required.

Asagayu (breakfast rice porridge) ¥1,300~ (7:00AM~10:00AM) Night~9:00PM



### 2 Kikugetsu-tei Teahouse

Edo period great teahouse

Kikugetsu-tei was treasured by successive generations of feudal lords of the Takamatsu Domain. Powdered green tea and sencha green tea are served with wagashi (traditional Japanese sweets).

[Admission fee] ¥500 (with sencha and sweets) ¥700 (with powdered green tea and sweets)



### 5 Kagawa Gift Shop Ritsurin-An

Find the newest attractions of Kagawa here.

About 2,500 items including sweets, foods, local sake (Japanese alcoholic beverage), handicrafts, general goods, etc., are available.

1. Memo pad ¥378 2. Masking tape ¥486 3. Wasanbo Meguri (Kagawa) ¥648 4. Hand towel ¥648



### 3 Japanese-style boat boarding point

Enjoy the beautiful scenery while riding on a Japanese-style boat.

Japanese-style boat "Wasen" navigates Lake Nanko. Viewing the garden while listening to an explanation by the boatman about the scenery will heighten the experience.

[Capacity] 6 persons [Riding time] Approximately 30 minutes [Reservations available] [Passage fare] ¥10/adult



### 6 Tokensho Island (Love Azalea)

The popular "Love Azalea" will prove a big hit on Instagram!

Azalea bushes magically formed into the shape of a heart. You can see heart-shaped bushes of pink azaleas in spring. Must-see for those who wish to get lucky and fall in love.





# Delicious and cute-looking! Recommended Takamatsu Sweets

So many instagrammable sweets that we recommend!  
You will definitely find your favorite sweets.



Asselaine Cream Puffs 100g ¥237~  
Cute bite-sized cream puffs!



The way you want it,  
sold in the amount you want.

## A Cream Factory

Cream puffs stuffed with thick cream are available in a variety of flavors.

Try any flavor you like including chocolate, powdered green tea and custard.

☎ 087-851-4315

📍 1-19-3 Nishikimachi, Takamatsu City, Kagawa

🕒 10:00AM~6:00PM (First come, first served)

📺 Sunday and national holidays

📺 Not available



Berry Berry ¥900

The perfect combination of mixed berries and pancake



Caramelized Banana and Walnut ¥900

Salted caramel adds a little extra flavor.

## B CAFE LOURDES

Pretty interior with a uniform appearance in blue and white

Try fluffy pancakes using ricotta cheese and meringue.

☎ 087-887-7778

📍 Fuki Bldg. 2F, 1-15Hyogomachi, Takamatsu City, Kagawa

🕒 11:00AM~6:30PM

📺 Closed Monday (Tuesday if Monday falls on a national holiday)

📺 Not available



1. Wasanbon Yogurt ¥220

Yogurt sweetened with wasanbon sugar

2. Jersey Milk ¥210

Thick milk with rich flavor and sweetness



Wasanbon Pudding ¥330

This richly flavored pudding melts in your mouth. Uses Wasanbon sugar made by Mitaniseito.



Chilled Cream Bun ¥240

Fully stuffed with 2 kinds of cream, using rare sugar for the dough!

## Oyama Farm USHI-OJISAN Marugamemachi Shop

A treasure house of milk sweets

Wasanbon Pudding that uses wasanbon sugar from Kagawa and milk produced from Jersey cows of Oyama Farm in Sanuki City, Kagawa Prefecture is recommended. Lots of other delicious items such as cakes, bread, milk, etc., are also available!

☎ 087-822-5165

📍 Takamatsu Marugamemachi Nibangai No.2 Bldg.1F, 14-6 Marugamemachi, Takamatsu City, Kagawa

🕒 11:00AM~6:00PM

📺 Closed Tuesday

📺 Not available



Chestnut Tart ¥650 (¥150 discount, if ordered with a drink)

Tart topping ingredients change according to the season. You can enjoy a tart with seasonal fruit.



French Toast with Mixed Berry Pistachio Ice Cream ¥750

The outside is crispy and the inside is fluffy and moist.



Nougatine Pistachio Ice Cream Sandwich ¥650

An exquisite combination of crispy caramelized and roasted almonds and ice cream!

## F Miyakoman Honpo

Nostalgic taste and flavor

In addition to Miyako Manju (traditional Japanese bun) stuffed with lightly sweet white bean paste, Dashimaki Tamago (Japanese-style rolled omelette), rice balls, etc., are also available.

☎ 087-834-7991

📍 1-9-2 Tokiwa-cho, Takamatsu City, Kagawa

🕒 8:00AM~6:30PM

📺 Closed Tuesday

📺 Not available



Miyako Manju ¥400 (set of 10 pieces)  
Small, cute manju♡



Take photos and upload them to SNS♪



Rice Ball ¥125~  
Rice balls are also available. Choose your favorite from a variety of rice ball fillings!

## F Doux Atelier Löwe Marugamemachi Green Shop

Sweets available only on this shopping street♡

"ONMAI" means sweets in Sanuki (present day Kagawa) dialect! Sweets available only here - not available in any other shop in Kagawa Prefecture - are worth eating!

☎ 087-811-7557

📍 Marugamemachi Green West Bldg. 1F, 7-16 Marugamemachi, Takamatsu City, Kagawa

🕒 10:00AM~8:00PM

📺 Closed Open throughout the year

📺 Available (Marugamemachi Green)



# Plenty of interesting things in Takamatsu Perfect for souvenirs!

There are many unique sweets and many kinds of goods that make full use of Kagawa specialties.  
Perfect as souvenirs for your friends and also as memories of your trip♡



**Meibutsu Kamado**  
¥226 (set of 3 pieces)  
Cute manju shaped like kamado (traditional Japanese cooking stove)



**Kamado Pie** ¥97  
A crispy texture pie with chestnut as an accent!

## A Meibutsu Kamado

Kaaamaaado kaaamaaado ♪

A long-established shop known for this commercial song that any resident in Kagawa Prefecture has heard! You can also relax in the coffee shop on the second floor.

☎087-851-2389

📍 2-10 Marugamemachi, Takamatsu City, Kagawa  
🕒 9:00AM~7:00PM Coffee shop: 9:00AM~6:30PM

📅 Closed New Year's Day, 3rd Monday (next day if the 3rd Monday falls on a national holiday), open throughout December

🅓 Designated parking lot available



## B Shofuan Kanesue

Marugamemachi Ichibangai Shop

**Making Warabimochi (bracken-starch jelly) for half a century**

Rare sugar is used for various sweets in Kanesue. Daiubo won the Best Award in the Kagawa Prefecture Product Contest.

☎087-887-8000

📍 Takamatsu Marugamemachi Ichibangai East Bldg. 1F, 1-11 Marugamemachi, Takamatsu City, Kagawa

🕒 10:00AM~8:00PM

📅 Closed New Year's Day

🅓 Designated parking lot available



**Nihohi Temari in Paulownia Box** ¥3,780

Traditional Japanese thread balls featured with natural fragrance made by the Sanuki Kagari Temari Preservation Association



**Sanuki Warabimochi**  
¥1,100 (450g)

Delicious warabimochi will make you feel happy and smile!



**Daiubo** ¥780 (set of 6 pieces)  
A very delicate taste with refreshing sweetness!

**Karaimokin**  
¥780 (set of 6 pieces)

The sweetness of the sweet potato will spread in your mouth♡



"Lacquer-coated Ceramic" Accessories

1. Teardrop ¥3,000
2. Dew drop ¥3,500
3. Checkered pattern ¥4,000

Glossy and cute-looking lacquer-coated accessories



## C Sanuki Sangyo Kogeikan SUN QUELAQUE

The retro cute interior is really catchy.

Not only sweets but also traditional crafts from Kagawa Prefecture are available! How about buying your own souvenirs?

☎087-887-8140

📍 9-2 Kataharamachi, Takamatsu City, Kagawa  
🕒 11:00AM~7:00PM

📅 Closed Wednesday

🅓 Not available



1. Hello Kitty Kawara Senbei ¥680 (tax included) (set of 5 pieces)

Each piece of kawara senbei (tile-shaped rice cracker) has a cute Hello Kitty brand on it. The brand changes according to the season.

2. Mail Kawara Senbei ¥594 (tax included) (set of 10 pieces)

Soke Kutsuwado's best seller!

**Kawara Man** ¥550 (tax included) (set of 5 pieces)  
Exquisite manju carefully baked by Japanese confectioners



**Sanuki Udon Noodle Gummy Candy** ¥410  
Unique local candies that resemble smooth and chewy raw udon noodles



## E Shikoku Shop 88

It really is the Udon Noodle Prefecture of Japan!  
There are many kinds of souvenirs related to udon noodles here.

Shikoku Shop 88 is full of attractive items from Shikoku and also carries a large selection of local character goods. Since the shop is located near the station, why not try to find your favorite souvenirs while waiting for your return train?

☎087-822-0459

📍 Maritime Plaza Takamatsu 1F, 2-1 Sunport, Takamatsu City, Kagawa

🕒 10:00AM~9:00PM (1st December ~ 28th February: 10:00AM~8:00PM)

📅 Closed Open throughout the year

🅓 Sunport underground parking



**Dashi Pack No. 11**  
¥476

Hananosyo original dashi pack using additive-free domestic ingredients!



look in



Dried small sardines, kombu kelp, and round herring



"Hananosyo" Wadashi Hojun Authentic Sanuki Udon ¥648  
Udon noodles using authentic wadashi can be enjoyed at home.



## D Soke Kutsuwado Founded in 1877!

This long-established shop has preserved its traditional flavors since its foundation. The shop has an eye-catching tiled roof.

☎087-851-9280

📍 4-3 Hyogomachi, Takamatsu City, Kagawa

🕒 8:00AM~7:00PM

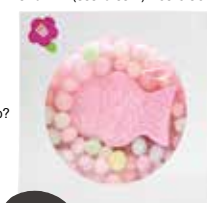
📅 Closed New Year's Day

🅓 Available



**White Box Frame OIRI and TAI** ¥540

Colorful and auspicious OIRI and TAI (sea bream) rice cracker



What is OIRI?

Auspicious rice cracker offered as part of a bride's dowry in Kagawa Prefecture. With gentle sweetness and a cinnamon flavor, OIRI will bring you happiness.



yumi

## F Wa Dashi An Hananosyo

A stylish shop specializing in Wadashi (Japanese soup stock)!

In a space adjacent to a long-standing dried food store, you can compare the taste of wadashi, or make your own original wadashi, consulting with a wadashi sommelier!

☎087-831-3307

📍 4-1 Minamishinmachi, Takamatsu City, Kagawa

🕒 11:00AM~5:00PM

📅 The first 3 days of the New Year

🅓 Not available





miku



rino



sayaka



yumi



nanami

Issued March 2019

Revised December 2019

Issued by PIPING Production Committee

In cooperation with the Takamatsu Chamber of Commerce and Industry,  
and Takamatsu University

Information in this guide book is as of December 2019.

Reproduction in whole or in part without permission is prohibited.

TAKE FREE